

GOLF CART



Phone/WhatsApp

+8615803882544

Zhengzhou Factory

BAK Industrial Park, Zhongmou County, Zhengzhou City,
Henan Province, China

Shenzhen Factory

BAK Industrial Park, Kuipeng Road, Kuixin Community, Kuiyong
Street, Dapeng New District, Shenzhen, China.

BAK Technology Building

No.9, Scientific Research Road, Nanshan District, Shenzhen,
China



ZHENGZHOU BAK NEW ENERGY AUTOMOBILE CO. LTD.

www.bak-ev.com

BAK

GOLF CART

INDEX

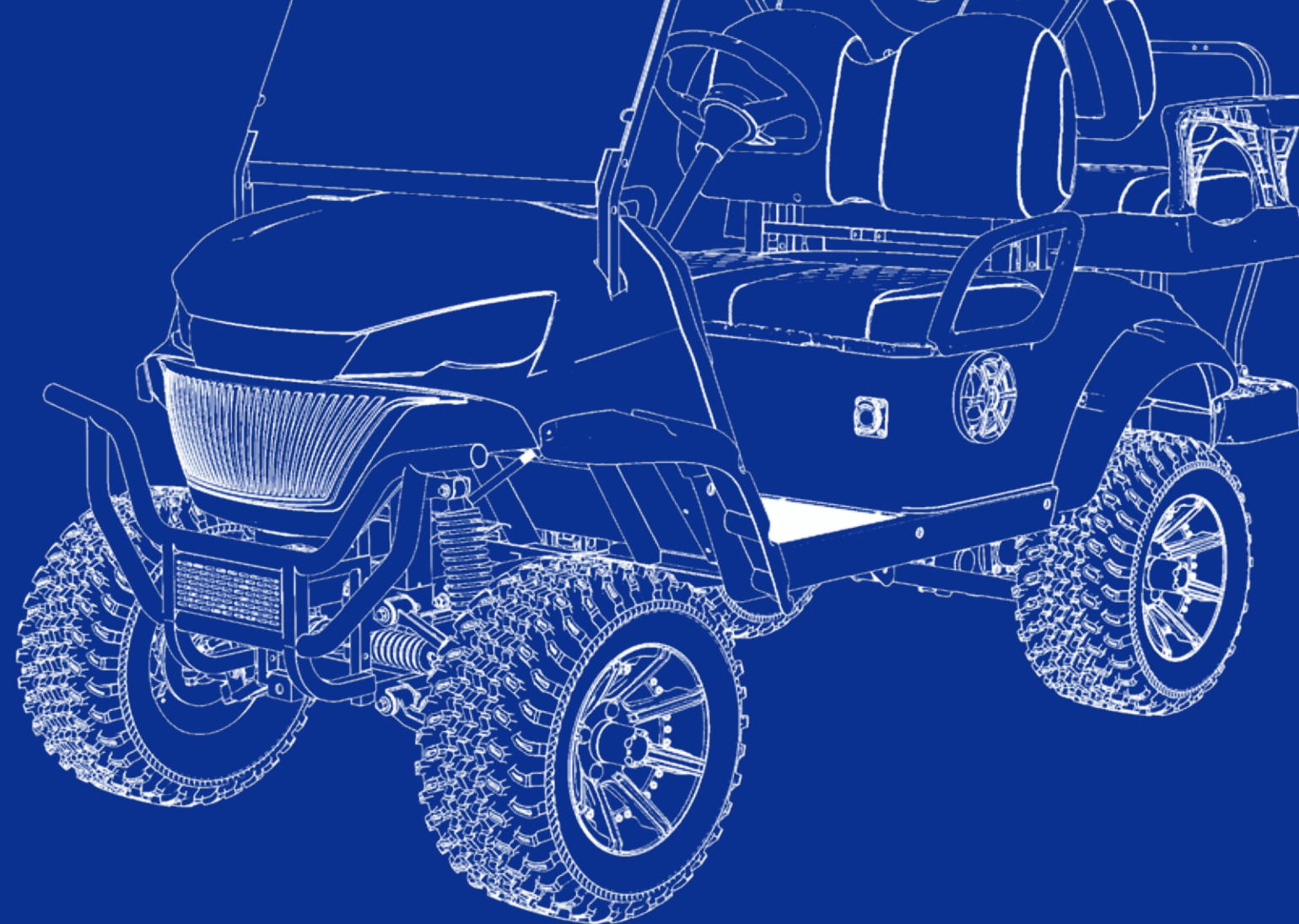
01 Company Profile

02 Bak Battery

03 Advantage

04 Product

05 Picture Show





BAK

Aerial View of Factory

■ COMPANY PROFILE ■



2013

Establishment Time

553

Covering an area of 553 acres

188+

188+ Patent Certificate

5%

R & D investment accounts for 5% of operating revenue

BAK Group, founded in 2001, is a leading lithium battery manufacturer in China. It has evolved into an internationally renowned new energy enterprise, integrating lithium-ion batteries, new energy vehicles, and battery recycling. The group boasts nearly 1,000 full-time R&D personnel and over 1,200 proprietary invention patents.

Zhengzhou BAK , established in 2013, is a leading golf cart manufacturer in China. It focuses on the R&D, production, and sales of golf carts, new energy vehicles, and sightseeing vehicles. The products are equipped with BAK battery packs specifically developed for golf carts, dedicated to providing high-performance, eco-friendly transportation solutions.

The Only Comprehensive Manufacturer of
Lithium Batteries and Golf Carts



Comprehensive Customization Services
from Design to Performance Parameters

OEM&ODM-International Design and
Strong Manufacturing Capability



Global Service Centers for Worry-Free
After-Sales Support





Trade Show



Maintenance-free



5-Year Free Cell Replacement



Top Battery Efficiency



Extended Range and Fast Charging



Long lifespan

BAK Self-Developed Golf Cart Battery Pack

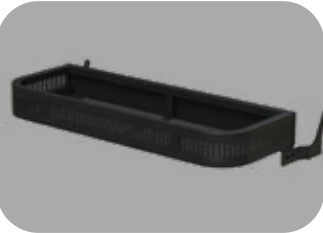
BAK's proprietary battery technology uses modular lithium design for efficient and convenient maintenance and battery replacement, significantly reducing costs and downtime, ensuring your operations remain uninterrupted. With exceptional performance and high efficiency, it operates in extreme temperatures (-40 to 60°C), offering safe, long-lasting power with- out concerns of failure or depletion. BAK battery packs deliver an unparalleled experience.

CHAMELEON

Golf Cart



■ GOLF CART ■



Front Storage Basket



Wheel



Pedal Brake



Seat Belts



Dashboard



Steering Wheel



Soundbar



Front Cover



Independent Suspension

Color options



Specification

| | | |
|--------------------------|----------------------------------|----------------------------------|
| • Chassis Specifications | High chassis | Low chassis |
| • Size Overall | 2460*1340*2030 mm | 2460*1340*1910 mm |
| • Net Weight | ≤520kg (Battery included) | ≤470kg (Battery included) |
| • Rated Passenger | 2 | |
| • Front/Rear Wheelbase | 1680mm | 1660mm |
| • Front/Rear Wheel Track | Front1015mm/Rear1075mm | Front930mm/Rear1030mm |
| • Min Ground Clearance | 170mm | 100mm |
| • Min Turning Radiusl | 3.20m | 3.15m |
| • Max Speed | 25MPH | 20MPH |
| • Climbing Ability | 30% unloaded; 25% fully loaded | |
| • Hill-Holding Ability | 25% | |
| • Endurance | 45-55mile (30km/h on flat roads) | 60-70mile (30km/h on flat roads) |
| • Braking Distance | < 5m | < 3.5m |

Electric System

| | |
|----------------|-------------------------------|
| • Motor | KDS, Rated power 5KW, 6000RPM |
| • Battery Type | Lithium battery 48V 100Ah |
| • Charger | Intelligent Cart Charger |
| • Charger Time | ≤ 4h |

Suspension & Brake System

| | |
|--------------------|---|
| • Front suspension | Double swing arm independent front suspension + coil springs + cylindrical hydraulic dampers. |
| • Rear suspension | Integral rear axle+14.2:1/12.3:1 ratio+coil spring dampers + cylindrical hydraulic cartridge dampers+rear stabilizer bars |
| • Brake system | Zero crossing rear axle; 4-wheel hydraulic brakes, 4-wheel disc brakes +electromagnetic brakes for parking (with vehicle towing function) |
| • Steering system | Bidirectional rack and pinion steering system, automatic backlash compensation function |

Exterior

| | |
|------------------|---|
| • Display screen | IP66 10-inch waterproof LCD multimedia instrument with vehicle detection function |
| • Sound system | IP66 Full Range Speaker H065B (with light) |
| • Seats | Integral foam moulded seat cushion + Solid color premium imported leather |
| • Floors | High-strength aluminium alloy profile anti-oxidised no-slip flooring |
| • Frame | High-strength sheet metal trapezoidal frame; |

2+2 Seats

Color options



Specification

| | | |
|--------------------------|----------------------------------|----------------------------------|
| • Chassis Specifications | High chassis | Low chassis |
| • Size Overall | 2975*1340*2070mm | 2975*1340*1950 mm |
| • Net Weight | ≤580kg (Battery included) | ≤530kg (Battery included) |
| • Rated Passenger | 4 | |
| • Front/Rear Wheelbase | 1680mm | 1660mm |
| • Front/Rear Wheel Track | Front1015mm/Rear1075mm | Front930mm/Rear1030mm |
| • Min Ground Clearance | 170mm | 100mm |
| • Min Turning Radiusl | 3.20m | 3.15m |
| • Max Speed | 25MPH | 20MPH |
| • Climbing Ability | 30% unloaded; 25% fully loaded | |
| • Hill-Holding Ability | 25% | |
| • Endurance | 55-70mile (30km/h on flat roads) | 70-80mile (30km/h on flat roads) |
| • Braking Distance | < 5m | < 3.5m |

Electric System

| | |
|----------------|-------------------------------|
| • Motor | KDS, Rated power 5KW, 6000RPM |
| • Battery Type | Lithium battery 48V 150Ah |
| • Charger | Intelligent Cart Charger |
| • Charger Time | ≤ 6h |

Suspension & Brake System

| | |
|--------------------|---|
| • Front suspension | Double swing arm independent front suspension + coil springs + cylindrical hydraulic dampers. |
| • Rear suspension | Integral rear axle+14.2:1/12.3:1 ratio+coil spring dampers + cylindrical hydraulic cartridge dampers+rear stabilizer bars |
| • Brake system | Zero crossing rear axle; 4-wheel hydraulic brakes, 4-wheel disc brakes +electromagnetic brakes for parking (with vehicle towing function) |
| • Steering system | Bidirectional rack and pinion steering system, automatic backlash compensation function |

Exterior

| | |
|------------------|---|
| • Display screen | IP66 10-inch waterproof LCD multimedia instrument with vehicle detection function |
| • Sound system | IP66 Full Range Speaker H065B (with light) |
| • Seats | Integral foam moulded seat cushion + Solid color premium imported leather |
| • Floors | High-strength aluminium alloy profile anti-oxidised no-slip flooring |
| • Frame | High-strength sheet metal trapezoidal frame; |

Color options



Specification

| | | |
|--------------------------|----------------------------------|----------------------------------|
| • Chassis Specifications | High chassis | Low chassis |
| • Size Overall | 3195*1340*2070 mm | 3195*1340*1950 mm |
| • Net Weight | ≅580kg (Battery included) | ≅530kg (Battery included) |
| • Rated Passenger | 4 | |
| • Front/Rear Wheelbase | 2436mm | 2416mm |
| • Front/Rear Wheel Track | Front1015mm/Rear1075mm | Front930mm/Rear1030mm |
| • Min Ground Clearance | 170mm | 100mm |
| • Min Turning Radiusl | 4.80m | 3.15m |
| • Max Speed | 25MPH | 20MPH |
| • Climbing Ability | 30% unloaded; 25% fully loaded | |
| • Hill-Holding Ability | 25% | |
| • Endurance | 55-70mile (30km/h on flat roads) | 70-80mile (30km/h on flat roads) |
| • Braking Distance | < 6m | < 3.5m |

Electric System

| | |
|----------------|-------------------------------|
| • Motor | KDS, Rated power 5KW, 6000RPM |
| • Battery Type | Lithium battery 48V 150Ah |
| • Charger | Intelligent Cart Charger |
| • Charger Time | ≅6h |

Suspension & Brake System

| | |
|--------------------|---|
| • Front suspension | Double swing arm independent front suspension + coil springs + cylindrical hydraulic dampers. |
| • Rear suspension | Integral rear axle+14.2:1/12.3:1 ratio+coil spring dampers + cylindrical hydraulic cartridge dampers+rear stabilizer bars |
| • Brake system | Zero crossing rear axle; 4-wheel hydraulic brakes, 4-wheel disc brakes +electromagnetic brakes for parking (with vehicle towing function) |
| • Steering system | Bidirectional rack and pinion steering system, automatic backlash compensation function |

Exterior

| | |
|------------------|---|
| • Display screen | IP66 10-inch waterproof LCD multimedia instrument with vehicle detection function |
| • Sound system | IP66 Full Range Speaker H065B (with light) |
| • Seats | Integral foam moulded seat cushion + Solid color premium imported leather |
| • Floors | High-strength aluminium alloy profile anti-oxidised no-slip flooring |
| • Frame | High-strength sheet metal trapezoidal frame; |

4+2 Seats

Color options



Specification

| | | |
|--------------------------|----------------------------------|----------------------------------|
| • Chassis Specifications | High chassis | Low chassis |
| • Size Overall | 3710*1340*2070mm | 3710*1340*1950mm |
| • Net Weight | ≅670kg (Battery included) | ≅620kg (Battery included) |
| • Rated Passenger | 6 | |
| • Front/Rear Wheelbase | 2436mm | 2416mm |
| • Front/Rear Wheel Track | Front1015mm/Rear1075mm | Front930mm/Rear1030mm |
| • Min Ground Clearance | 170mm | 100mm |
| • Min Turning Radiusl | 4.80m | 3.15m |
| • Max Speed | 25MPH | 20MPH |
| • Climbing Ability | 30% unloaded; 25% fully loaded | |
| • Hill-Holding Ability | 25% | |
| • Endurance | 60-80mile (30km/h on flat roads) | 70-80mile (30km/h on flat roads) |
| • Braking Distance | < 5m | < 3.5m |

Electric System

| | |
|----------------|---------------------------|
| • Motor | KDS, 5KW |
| • Battery Type | Lithium battery 48V 150Ah |
| • Charger | Intelligent Cart Charger |
| • Charger Time | ≅8h |

Suspension & Brake System

| | |
|--------------------|---|
| • Front suspension | Double swing arm independent front suspension + coil springs + cylindrical hydraulic dampers. |
| • Rear suspension | Integral rear axle+14.2:1/12.3 ratio+coil spring dampers + cylindrical hydraulic cartridge dampers+rear stabilizer bars |
| • Brake system | Zero crossing rear axle; 4-wheel hydraulic brakes, 4-wheel disc brakes +electromagnetic brakes for parking (with vehicle towing function) |
| • Steering system | Bidirectional rack and pinion steering system, automatic backlash compensation function |

Exterior

| | |
|------------------|---|
| • Display screen | IP66 10-inch waterproof LCD multimedia instrument with vehicle detection function |
| • Sound system | IP66 Full Range Speaker H065B (with light) |
| • Seats | Integral foam moulded seat cushion + Solid color premium imported leather |
| • Floors | High-strength aluminium alloy profile anti-oxidised no-slip flooring |
| • Frame | High-strength sheet metal trapezoidal frame; |

Color options



Specification

| | | |
|--------------------------|----------------------------------|----------------------------------|
| • Chassis Specifications | High chassis | Low chassis |
| • Size Overall | 2460*1340*2030 mm | 2460*1340*1910 mm |
| • Net Weight | ≦520kg (Battery included) | ≦470kg (Battery included) |
| • Rated Passenger | 2 | |
| • Front/Rear Wheelbase | 1680mm | 1660mm |
| • Front/Rear Wheel Track | Front1015mm/Rear1075mm | Front930mm/Rear1030mm |
| • Min Ground Clearance | 170mm | 100mm |
| • Min Turning Radiusl | 3.20m | 3.15m |
| • Max Speed | 25MPH | 20MPH |
| • Climbing Ability | 30% unloaded; 25% fully loaded | |
| • Hill-Holding Ability | 25% | |
| • Endurance | 45-55mile (30km/h on flat roads) | 60-70mile (30km/h on flat roads) |
| • Braking Distance | <5m | <3.5m |

Electric System

| | |
|----------------|-------------------------------|
| • Motor | KDS, Rated power 5KW, 6000RPM |
| • Battery Type | Lithium battery 48V 100Ah |
| • Charger | Intelligent Cart Charger |
| • Charger Time | ≦4h |

Suspension & Brake System

| | |
|--------------------|---|
| • Front suspension | Double swing arm independent front suspension + coil springs + cylindrical hydraulic dampers. |
| • Rear suspension | Integral rear axle+14.2:1/12.3:1 ratio+coil spring dampers + cylindrical hydraulic cartridge dampers+rear stabilizer bars |
| • Brake system | Zero crossing rear axle; 4-wheel hydraulic brakes, 4-wheel disc brakes +electromagnetic brakes for parking (with vehicle towing function) |
| • Steering system | Bidirectional rack and pinion steering system, automatic backlash compensation function |

Exterior

| | |
|------------------|---|
| • Display screen | IP66 10-inch waterproof LCD multimedia instrument with vehicle detection function |
| • Sound system | IP66 Full Range Speaker H065B (with light) |
| • Seats | Integral foam moulded seat cushion + Solid color premium imported leather |
| • Floors | High-strength aluminium alloy profile anti-oxidised no-slip flooring |
| • Frame | High-strength sheet metal trapezoidal frame; |

2+2 Seats

Color options



Specification

| | | |
|--------------------------|----------------------------------|----------------------------------|
| • Chassis Specifications | High chassis | Low chassis |
| • Size Overall | 2975*1340*2070mm | 2975*1340*1950 mm |
| • Net Weight | ≦580kg (Battery included) | ≦530kg (Battery included) |
| • Rated Passenger | 4 | |
| • Front/Rear Wheelbase | 1680mm | 1660mm |
| • Front/Rear Wheel Track | Front1015mm/Rear1075mm | Front930mm/Rear1030mm |
| • Min Ground Clearance | 170mm | 100mm |
| • Min Turning Radiusl | 3.20m | 3.15m |
| • Max Speed | 25MPH | 20MPH |
| • Climbing Ability | 30% unloaded; 25% fully loaded | |
| • Hill-Holding Ability | 25% | |
| • Endurance | 55-70mile (30km/h on flat roads) | 70-80mile (30km/h on flat roads) |
| • Braking Distance | <5m | <3.5m |

Electric System

| | |
|----------------|-------------------------------|
| • Motor | KDS, Rated power 5KW, 6000RPM |
| • Battery Type | Lithium battery 48V 150Ah |
| • Charger | Intelligent Cart Charger |
| • Charger Time | ≦6h |

Suspension & Brake System

| | |
|--------------------|---|
| • Front suspension | Double swing arm independent front suspension + coil springs + cylindrical hydraulic dampers. |
| • Rear suspension | Integral rear axle+14.2:1/12.3:1 ratio+coil spring dampers + cylindrical hydraulic cartridge dampers+rear stabilizer bars |
| • Brake system | Zero crossing rear axle; 4-wheel hydraulic brakes, 4-wheel disc brakes +electromagnetic brakes for parking (with vehicle towing function) |
| • Steering system | Bidirectional rack and pinion steering system, automatic backlash compensation function |

Exterior

| | |
|------------------|---|
| • Display screen | IP66 10-inch waterproof LCD multimedia instrument with vehicle detection function |
| • Sound system | IP66 Full Range Speaker H065B (with light) |
| • Seats | Integral foam moulded seat cushion + Solid color premium imported leather |
| • Floors | High-strength aluminium alloy profile anti-oxidised no-slip flooring |
| • Frame | High-strength sheet metal trapezoidal frame; |

Color options



Specification

| | | |
|--------------------------|----------------------------------|----------------------------------|
| • Chassis Specifications | High chassis | Low chassis |
| • Size Overall | 3195*1340*2070 mm | 3195*1340*1950 mm |
| • Net Weight | ≦580kg (Battery included) | ≦530kg (Battery included) |
| • Rated Passenger | 4 | |
| • Front/Rear Wheelbase | 2436mm | 2416mm |
| • Front/Rear Wheel Track | Front1015mm/Rear1075mm | Front930mm/Rear1030mm |
| • Min Ground Clearance | 170mm | 100mm |
| • Min Turning Radiust | 4.80m | 3.15m |
| • Max Speed | 25MPH | 20MPH |
| • Climbing Ability | 30% unloaded; 25% fully loaded | |
| • Hill-Holding Ability | 25% | |
| • Endurance | 55-70mile (30km/h on flat roads) | 70-80mile (30km/h on flat roads) |
| • Braking Distance | < 6m | < 3.5m |

Electric System

| | |
|----------------|-------------------------------|
| • Motor | KDS, Rated power 5KW, 6000RPM |
| • Battery Type | Lithium battery 48V 150Ah |
| • Charger | Intelligent Cart Charger |
| • Charger Time | ≦6h |

Suspension & Brake System

| | |
|--------------------|---|
| • Front suspension | Double swing arm independent front suspension + coil springs + cylindrical hydraulic dampers. |
| • Rear suspension | Integral rear axle+14.2:1/12.3:1 ratio+coil spring dampers + cylindrical hydraulic cartridge dampers+rear stabilizer bars |
| • Brake system | Zero crossing rear axle; 4-wheel hydraulic brakes, 4-wheel disc brakes +electromagnetic brakes for parking (with vehicle towing function) |
| • Steering system | Bidirectional rack and pinion steering system, automatic backlash compensation function |

Exterior

| | |
|------------------|---|
| • Display screen | IP66 10-inch waterproof LCD multimedia instrument with vehicle detection function |
| • Sound system | IP66 Full Range Speaker H065B (with light) |
| • Seats | Integral foam moulded seat cushion + Solid color premium imported leather |
| • Floors | High-strength aluminium alloy profile anti-oxidised no-slip flooring |
| • Frame | High-strength sheet metal trapezoidal frame; |

4+2 Seats

Color options



Specification

| | | |
|--------------------------|----------------------------------|----------------------------------|
| • Chassis Specifications | High chassis | Low chassis |
| • Size Overall | 3710*1340*2070mm | 3710*1340*1950mm |
| • Net Weight | ≦670kg (Battery included) | ≦620kg (Battery included) |
| • Rated Passenger | 6 | |
| • Front/Rear Wheelbase | 2436mm | 2416mm |
| • Front/Rear Wheel Track | Front1015mm/Rear1075mm | Front930mm/Rear1030mm |
| • Min Ground Clearance | 170mm | 100mm |
| • Min Turning Radiust | 4.80m | 3.15m |
| • Max Speed | 25MPH | 20MPH |
| • Climbing Ability | 30% unloaded; 25% fully loaded | |
| • Hill-Holding Ability | 25% | |
| • Endurance | 60-80mile (30km/h on flat roads) | 70-80mile (30km/h on flat roads) |
| • Braking Distance | < 5m | < 3.5m |

Electric System

| | |
|----------------|---------------------------|
| • Motor | KDS, 5KW |
| • Battery Type | Lithium battery 48V 150Ah |
| • Charger | Intelligent Cart Charger |
| • Charger Time | ≦8h |

Suspension & Brake System

| | |
|--------------------|---|
| • Front suspension | Double swing arm independent front suspension + coil springs + cylindrical hydraulic dampers. |
| • Rear suspension | Integral rear axle+14.2:1/12.3:1 ratio+coil spring dampers + cylindrical hydraulic cartridge dampers+rear stabilizer bars |
| • Brake system | Zero crossing rear axle; 4-wheel hydraulic brakes, 4-wheel disc brakes +electromagnetic brakes for parking (with vehicle towing function) |
| • Steering system | Bidirectional rack and pinion steering system, automatic backlash compensation function |

Exterior

| | |
|------------------|---|
| • Display screen | IP66 10-inch waterproof LCD multimedia instrument with vehicle detection function |
| • Sound system | IP66 Full Range Speaker H065B (with light) |
| • Seats | Integral foam moulded seat cushion + Solid color premium imported leather |
| • Floors | High-strength aluminium alloy profile anti-oxidised no-slip flooring |
| • Frame | High-strength sheet metal trapezoidal frame; |

Color options



Specification

| | |
|--------------------------|----------------------|
| • Size Overall | 2710×1175×1850mm |
| • Net Weight | 570kg |
| • Rated Passenger | 4 |
| • Front/Rear Wheelbase | 1670mm |
| • Front/Rear Wheel Track | Front885mm/Rear980mm |
| • Min Ground Clearance | 120mm |
| • Min Turning Radiusl | 3.20m |
| • Max Speed | 25MPH |
| • Climbing Ability | 30% |
| • Endurance | 80-100km |

Electric System

| | |
|----------------|---|
| • Motor | Rated power 5KW , 6000RPM |
| • Controller | AC controller |
| • Battery Type | Maintenance-free deep cycle lead-acid battery 8V*6 pieces 48V |
| • Charger | intelligent fully automatic charger |
| • DC converter | DC-DC converter |

Suspension & Brake System

| | |
|------------------------|---|
| • Steering system | Bidirectional push rack and pinion steering gear |
| • Braking System | Self-adjusting mechanical brake and anti-skid design |
| • Rear axle system | Integral infinitely variable rear axle with main reduction and differential |
| • Front damping system | Independent suspension, coil springs |
| • Rear damping system | Simple hydraulic shock absorbers for steel plate springs |

Exterior

| | |
|--------------------|--|
| • Front windshield | Special acrylic windshield |
| • Body | Body of automobile: ABS with automotive paint (4-seater is injection molded with automotive paint;) |
| • Ceiling | The 2-seater is ABS injection molding material; the others are thickened blister molding material. |
| • Seat | Foam molded core, UV-resistant seat cushion |
| • Floor | Wear-resistant and non-slip rubber material |
| • Frame | High-strength steel structural parts, electrophoretic surface treatment process |

4+2 Seats

Color options



Specification

| | |
|--------------------------|-----------------------|
| • Size Overall | 3495×1175×1850mm |
| • Net Weight | 640kg |
| • Rated Passenger | 6 |
| • Front/Rear Wheelbase | 2440mm |
| • Front/Rear Wheel Track | Front 885mm/Rear980mm |
| • Min Ground Clearance | 120mm |
| • Min Turning Radiusl | 3.20m |
| • Max Speed | 25MPH |
| • Climbing Ability | 30% |
| • Endurance | 70-90km |

Electric System

| | |
|----------------|---|
| • Motor | Rated power 5KW , 6000RPM |
| • Controller | AC controller |
| • Battery Type | Maintenance-free deep cycle lead-acid battery 8V*6 pieces 48V |
| • Charger | intelligent fully automatic charger |
| • DC converter | DC-DC converter |

Suspension & Brake System

| | |
|------------------------|---|
| • Steering system | Bidirectional push rack and pinion steering gear |
| • Braking System | Self-adjusting mechanical brake and anti-skid design |
| • Rear axle system | Integral infinitely variable rear axle with main reduction and differential |
| • Front damping system | Independent suspension, coil springs |
| • Rear damping system | Simple hydraulic shock absorbers for steel plate springs |

Exterior

| | |
|--------------------|--|
| • Front windshield | Special acrylic windshield |
| • Body | Body of automobile: ABS with automotive paint (4-seater is injection molded with automotive paint;) |
| • Ceiling | The 2-seater is ABS injection molding material; the others are thickened blister molding material. |
| • Seat | Foam molded core, UV-resistant seat cushion |
| • Floor | Wear-resistant and non-slip rubber material |
| • Frame | High-strength steel structural parts, electrophoretic surface treatment process |

Color options



Specification

| | | |
|--------------------------|----------------------------------|----------------------------------|
| • Chassis Specifications | High chassis | Low chassis |
| • Size Overall | 2975*1340*2070mm | 2975*1340*1950 mm |
| • Net Weight | ≤580kg （Battery included） | ≤530kg （Battery included） |
| • Rated Passenger | 4 | |
| • Front/Rear Wheelbase | 1680mm | 1660mm |
| • Front/Rear Wheel Track | Front1015mm/Rear1075mm | Front930mm/Rear1030mm |
| • Min Ground Clearance | 170mm | 100mm |
| • Min Turning Radiusl | 3.20m | 3.15m |
| • Max Speed | 25MPH | 20MPH |
| • Climbing Ability | 30% unloaded; 25% fully loaded | |
| • Hill-Holding Ability | 25% | |
| • Endurance | 55-70mile (30km/h on flat roads) | 70-80mile (30km/h on flat roads) |
| • Braking Distance | < 5m | < 3.5m |

Electric System

| | |
|----------------|-------------------------------|
| • Motor | KDS, Rated power 5KW, 6000RPM |
| • Battery Type | Lithium battery 48V 150Ah |
| • Charger | Intelligent Cart Charger |
| • Charger Time | ≤6h |

Suspension & Brake System

| | |
|--------------------|---|
| • Front suspension | Double swing arm independent front suspension + coil springs + cylindrical hydraulic dampers. |
| • Rear suspension | Integral rear axle+14.2:1/12.3:1 ratio+coil spring dampers + cylindrical hydraulic cartridge dampers+rear stabilizer bars |
| • Brake system | Zero crossing rear axle; 4-wheel hydraulic brakes, 4-wheel disc brakes +electromagnetic brakes for parking (with vehicle towing function) |
| • Steering system | Bidirectional rack and pinion steering system, automatic backlash compensation function |

Exterior

| | |
|------------------|---|
| • Display screen | IP66 10-inch waterproof LCD multimedia instrument with vehicle detection function |
| • Sound system | IP66 Full Range Speaker H065B (with light) |
| • Seats | Integral foam moulded seat cushion + Solid color premium imported leather |
| • Floors | High-strength aluminium alloy profile anti-oxidised no-slip flooring |
| • Frame | High-strength sheet metal trapezoidal frame; |

2+2 Seats

Color options



Specification

| | |
|--------------------------|----------------------------------|
| • Size Overall | 2975*1340*2070mm |
| • Net Weight | ≤580kg （Battery included） |
| • Rated Passenger | 4 |
| • Front/Rear Wheelbase | 1680mm |
| • Front/Rear Wheel Track | Front1015mm/Rear1075mm |
| • Min Ground Clearance | 170mm |
| • Min Turning Radiusl | 3.20m |
| • Max Speed | 25MPH |
| • Climbing Ability | 30% unloaded; 25% fully loaded |
| • Hill-Holding Ability | 25% |
| • Endurance | 55-70mile (30km/h on flat roads) |
| • Braking Distance | < 5m |

Electric System

| | |
|----------------|-------------------------------|
| • Motor | KDS, Rated power 5KW, 6000RPM |
| • Battery Type | Lithium battery 48V 150Ah |
| • Charger | Intelligent Cart Charger |
| • Charger Time | ≤6h |

Suspension & Brake System

| | |
|--------------------|---|
| • Front suspension | Double swing arm independent front suspension + coil springs + cylindrical hydraulic dampers. |
| • Rear suspension | Integral rear axle+14.2:1 ratio+coil spring dampers + cylindrical hydraulic cartridge dampers+rear stabilizer bars |
| • Brake system | Zero crossing rear axle; 4-wheel hydraulic brakes, 4-wheel disc brakes +electromagnetic brakes for parking (with vehicle towing function) |
| • Steering system | Bidirectional rack and pinion steering system, automatic backlash compensation function |

Exterior

| | |
|------------------|---|
| • Display screen | IP66 10-inch waterproof LCD multimedia instrument with vehicle detection function |
| • Sound system | IP66 Full Range Speaker H065B (with light) |
| • Seats | Integral foam moulded seat cushion + Solid color premium imported leather |
| • Floors | High-strength aluminium alloy profile anti-oxidised no-slip flooring |
| • Frame | High-strength sheet metal trapezoidal frame; |

Color options



Specification

| | |
|--------------------------|---------------------------|
| • Size Overall | 3260*1360*2050mm |
| • Net Weight | ≅580kg （Battery included） |
| • Rated Passenger | 4 |
| • Front/Rear Wheelbase | 2410mm |
| • Front/Rear Wheel Track | Front1020mm/Rear1070mm |
| • Min Ground Clearance | 170mm |
| • Min Turning Radiusl | 3.20m |
| • Max Speed | 25MPH |
| • Climbing Ability | 25% |
| • Hill-Holding Ability | 25% |
| • Endurance | 55-70mile （Flat roads） |
| • Braking Distance | ≅5m |

Electric System

| | |
|----------------|-------------------------------|
| • Motor | KDS, Rated power 5KW, 6000RPM |
| • Battery Type | Lithium battery 48V 150Ah |
| • Charger | Intelligent Cart Charger |
| • Charger Time | ≅8h |

Suspension & Brake System

| | |
|--------------------|---|
| • Front suspension | Double swing arm independent front suspension + coil springs + cylindrical hydraulic dampers. |
| • Rear suspension | Integral rear axle+14.2:1 ratio+coil spring dampers + cylindrical hydraulic cartridge dampers+rear stabilizer bars |
| • Brake system | Zero crossing rear axle; 4-wheel hydraulic brakes, 4-wheel disc brakes +electromagnetic brakes for parking (with vehicle towing function) |
| • Steering system | Bidirectional rack and pinion steering system, automatic backlash compensation function |

Exterior

| | |
|------------------|---|
| • Display screen | IP66 10-inch waterproof LCD multimedia instrument with vehicle detection function |
| • Sound system | IP66 Full Range Speaker H065B (with light) |
| • Seats | Integral foam moulded seat cushion + Solid color premium imported leather |
| • Floors | High-strength aluminium alloy profile anti-oxidised no-slip flooring |
| • Frame | High-strength sheet metal trapezoidal frame; |

Color options



Specification

| | |
|--------------------------|----------------------------------|
| • Size Overall | 2975*1340*2070mm |
| • Net Weight | ≅580kg （Battery included） |
| • Rated Passenger | 4 |
| • Front/Rear Wheelbase | 1680mm |
| • Front/Rear Wheel Track | Front1015mm/Rear1075mm |
| • Min Ground Clearance | 170mm |
| • Min Turning Radiusl | 3.20m |
| • Max Speed | 25MPH |
| • Climbing Ability | 30% unloaded; 25% fully loaded |
| • Hill-Holding Ability | 25% |
| • Endurance | 55-70mile (30km/h on flat roads) |
| • Braking Distance | <5m |

Electric System

| | |
|----------------|-------------------------------|
| • Motor | KDS, Rated power 5KW, 6000RPM |
| • Battery Type | Lithium battery 48V 150Ah |
| • Charger | Intelligent Cart Charger |
| • Charger Time | ≅6h |

Suspension & Brake System

| | |
|--------------------|---|
| • Front suspension | Double swing arm independent front suspension + coil springs + cylindrical hydraulic dampers. |
| • Rear suspension | Integral rear axle+14.2:1 ratio+coil spring dampers + cylindrical hydraulic cartridge dampers+rear stabilizer bars |
| • Brake system | Zero crossing rear axle; 4-wheel hydraulic brakes, 4-wheel disc brakes +electromagnetic brakes for parking (with vehicle towing function) |
| • Steering system | Bidirectional rack and pinion steering system, automatic backlash compensation function |

Exterior

| | |
|------------------|---|
| • Display screen | IP66 10-inch waterproof LCD multimedia instrument with vehicle detection function |
| • Sound system | IP66 Full Range Speaker H065B (with light) |
| • Seats | Integral foam moulded seat cushion + Solid color premium imported leather |
| • Floors | High-strength aluminium alloy profile anti-oxidised no-slip flooring |
| • Frame | High-strength sheet metal trapezoidal frame; |

Color options



Specification

| | |
|--------------------------|-------------------------|
| • Size Overall | 3025mm*1180mm*1890mm |
| • Net Weight | ≤460kg(Without battery) |
| • Rated Passenger | 4 |
| • Front/Rear Wheelbase | 2145mm |
| • Front/Rear Wheel Track | Front1045mm/Rear1085mm |
| • Min Ground Clearance | 170mm |
| • Max Speed | 25MPH |
| • Maximum Slope | 25% |
| • Endurance | 55-70mile |
| • Braking Distance | < 6m |

Electric System

| | |
|----------------|---------------------------|
| • Motor | Rated power 5KW 000RPM |
| • Battery Type | Lithium battery 48V 150Ah |
| • Charger | Intelligent Cart Charger |
| • Charger Time | ≤6h |

Suspension & Brake System

| | |
|--------------------|--|
| • Front suspension | Double swing arm independent front suspension + coils prings + cylindrical hydraulic dampers. |
| • Rear suspension | Integral rear axle12.3:1 ratio+Coil spring dampers cylindrical hydraulic cartridge dampers+rear stabilizer bars |
| • Brake system | 4-wheel hydraulic brakes, 4-wheel disc brakes +electromagnetic brakes for parking (with vehicle towing function) |
| • Steering system: | Bidirectional rack and pinion steering system, automatic backlash compensation function |

Exterior

| | |
|------------------|---|
| • Display screen | IP66 10-inch waterproof LCD multimedia instrument with vehicle detection function |
| • Sound system | IP66 Full Range Speaker H065B (with light) |
| • Seats | Integral foam moulded seat cushion + Solid color premium imported |
| • Floors | Wear-resistant and non-slip rubber material |
| • Frame | High-strength sheet metal trapezoidal frame; |

Color options



Specification

| | |
|--------------------------|-------------------------|
| • Size Overall | 3050*1380*2080mm |
| • Net Weight | ≤460kg(Without battery) |
| • Rated Passenger | 4 |
| • Front/Rear Wheelbase | 1740mm |
| • Front/Rear Wheel Track | Front975mm/Rear1005mm |
| • Min Ground Clearance | 170mm |
| • Max Speed | 25MPH |
| • Maximum Slope | 25% |
| • Endurance | 80-100km |
| • Braking Distance | < 5m |

Electric System

| | |
|----------------|---------------------------|
| • Motor | Rated power 5KW , 6000RPM |
| • Battery Type | Lithium battery 48V 150Ah |
| • Charger | Intelligent Cart Charger |
| • Charger Time | ≤6h |

Suspension & Brake System

| | |
|--------------------|--|
| • Front suspension | Independent MacPherson front suspension |
| • Rear suspension | Integral rear axle12.3:1 ratio+Coil spring dampers cylindrical hydraulic cartridge dampers+rear stabilizer bars |
| • Brake system | 4-wheel hydraulic brakes, 4-wheel disc brakes +electromagnetic brakes for parking (with vehicle towing function) |
| • Steering system | Bidirectional rack and pinion steering system, automatic backlash compensation function |

Exterior

| | |
|------------------|---|
| • Display screen | IP66 10-inch waterproof LCD multimedia instrument with vehicle detection function |
| • Sound system | IP66 Full Range Speaker H065B (with light) |
| • Seats | Integral foam moulded seat cushion + Solid color premium imported |
| • Floors | Wear-resistant and non-slip rubber material |
| • Frame | High-strength sheet metal trapezoidal frame; |

F

GOLF CART 2+2 Seats

Color options



Specification

| | |
|--------------------------|----------------------------------|
| • Size Overall | 2975*1340*2070mm |
| • Net Weight | ≤580kg （Battery included） |
| • Rated Passenger | 4 |
| • Front/Rear Wheelbase | 1680mm |
| • Front/Rear Wheel Track | Front1015mm/Rear1075mm |
| • Min Ground Clearance | 170mm |
| • Min Turning Radiusl | 3.20m |
| • Max Speed | 25MPH |
| • Climbing Ability | 30% unloaded; 25% fully loaded |
| • Hill-Holding Ability | 25% |
| • Endurance | 55-70mile (30km/h on flat roads) |
| • Braking Distance | <5m |

Electric System

| | |
|----------------|-------------------------------|
| • Motor | KDS, Rated power 5KW, 6000RPM |
| • Battery Type | Lithium battery 48V 150Ah |
| • Charger | Intelligent Cart Charger |
| • Charger Time | ≤6h |

Suspension & Brake System

| | |
|--------------------|---|
| • Front suspension | Double swing arm independent front suspension + coil springs + cylindrical hydraulic dampers. |
| • Rear suspension | Integral rear axle+14.2:1 ratio+coil spring dampers + cylindrical hydraulic cartridge dampers+rear stabilizer bars |
| • Brake system | Zero crossing rear axle; 4-wheel hydraulic brakes, 4-wheel disc brakes +electromagnetic brakes for parking (with vehicle towing function) |
| • Steering system | Bidirectional rack and pinion steering system, automatic backlash compensation function |

Exterior

| | |
|------------------|---|
| • Display screen | IP66 10-inch waterproof LCD multimedia instrument with vehicle detection function |
| • Sound system | IP66 Full Range Speaker H065B (with light) |
| • Seats | Integral foam moulded seat cushion + Solid color premium imported leather |
| • Floors | High-strength aluminium alloy profile anti-oxidised no-slip flooring |
| • Frame | High-strength sheet metal trapezoidal frame; |



Hunting Cart



FEARLESS

MUDDY



CAMOUFLAGGE



CHAMELEON



