



We Extend Life and Living Space

# Company Introduction



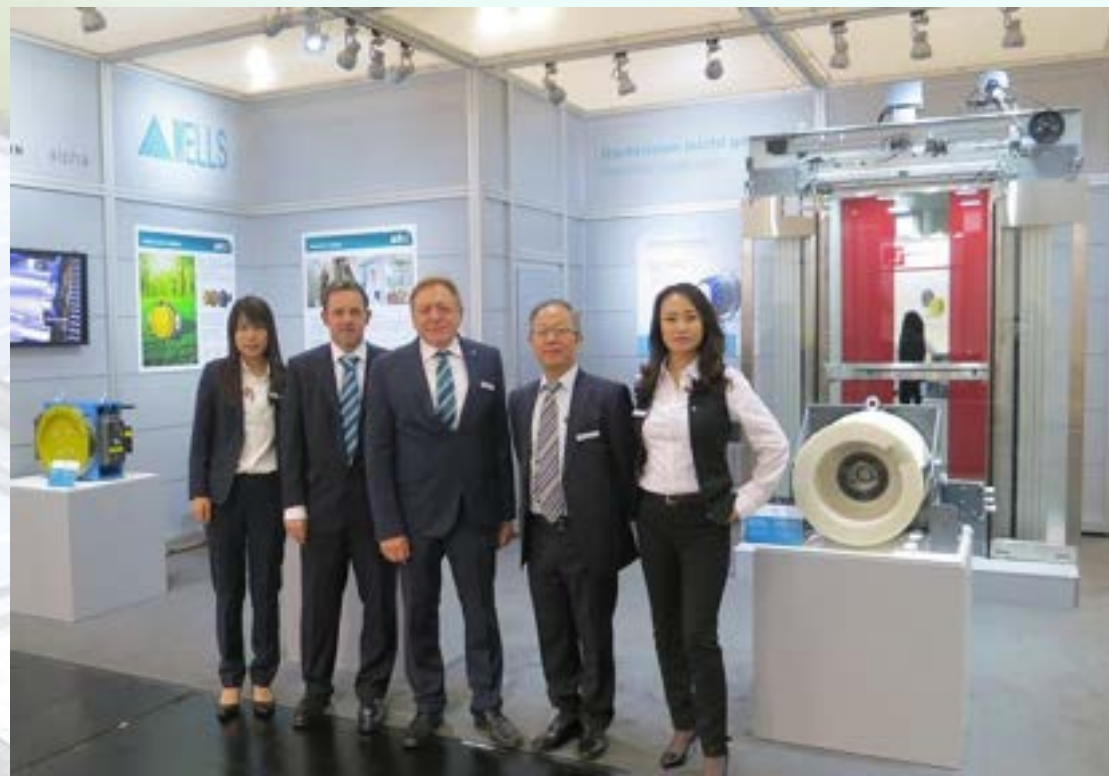
上海威茨堡电梯有限公司 | WELLS ELEVATOR PRODUCTS CO., LTD.

## 公司简介 Company Introduction



WELLS Elevator Products Co., Ltd. is a professional elevator, cooperated with Wurzburg Aufzüge GmbH since 2005, which is specialized in design and manufacture of elevator and escalator, and also experienced in non standard elevator and escalator design and manufacture, after over 10 years' experience in international market, WELLS' team is familiar with kinds of requirement from different countries and region, and provides individual solution to meet customers' requirement. Most of the elevator, escalator and moving walk products of WELLS are CE certified by TUV, The products of WELLS are compliant with EN81 and the Quality Management is also qualified with ISO9001, ISO14001 and OHSAS 18001 by CAS

**We Extend Life & Living Space**





## 公司简介 Company Introduction



WELLS elevator is a quality oriented company and also is innovative company, with the technical support from German, WELLS has also developed lift with advanced technology and has also got over 20 patents in elevator technology and design

Up to now our products have been exported and installed in Germany, England, Australia, Singapore, Malaysia, Indonesia, Philippine, Thailand, India, Middle East, East Europe, South American and South Africa, etc. over 30 countries





**Value:**

Innovation and Creation, Cooperation and Development

**Vision:**

To be the world first class advanced manufacture of vertical transportation equipment.

**Mission:**

To provide safe, reliable, comfortable and satisfied transportation equipment and service

**Quality Policy:**

Meticulous and Keep Improving, Pursuing Zero Defect



Quality Products Best Service



### **The Staff:**

well experienced in elevator design and knowledgeable of job site condition  
always ready to provide satisfied solution

### **The Technologies:**

Keep cooperation with international partner, to develop new technology and to apply the new technology in products

### **The products:**

Combine intelligence, multi-function and reliability in products, individual design  
and manufacture satisfies customers requirement





## 公司简介

Company Introduction



## Company Facility



## Production Line

# 公司简介

Company Introduction



Company Facility



R&D Center



# 公司简介

Company Introduction



Company Facility



Test Tower

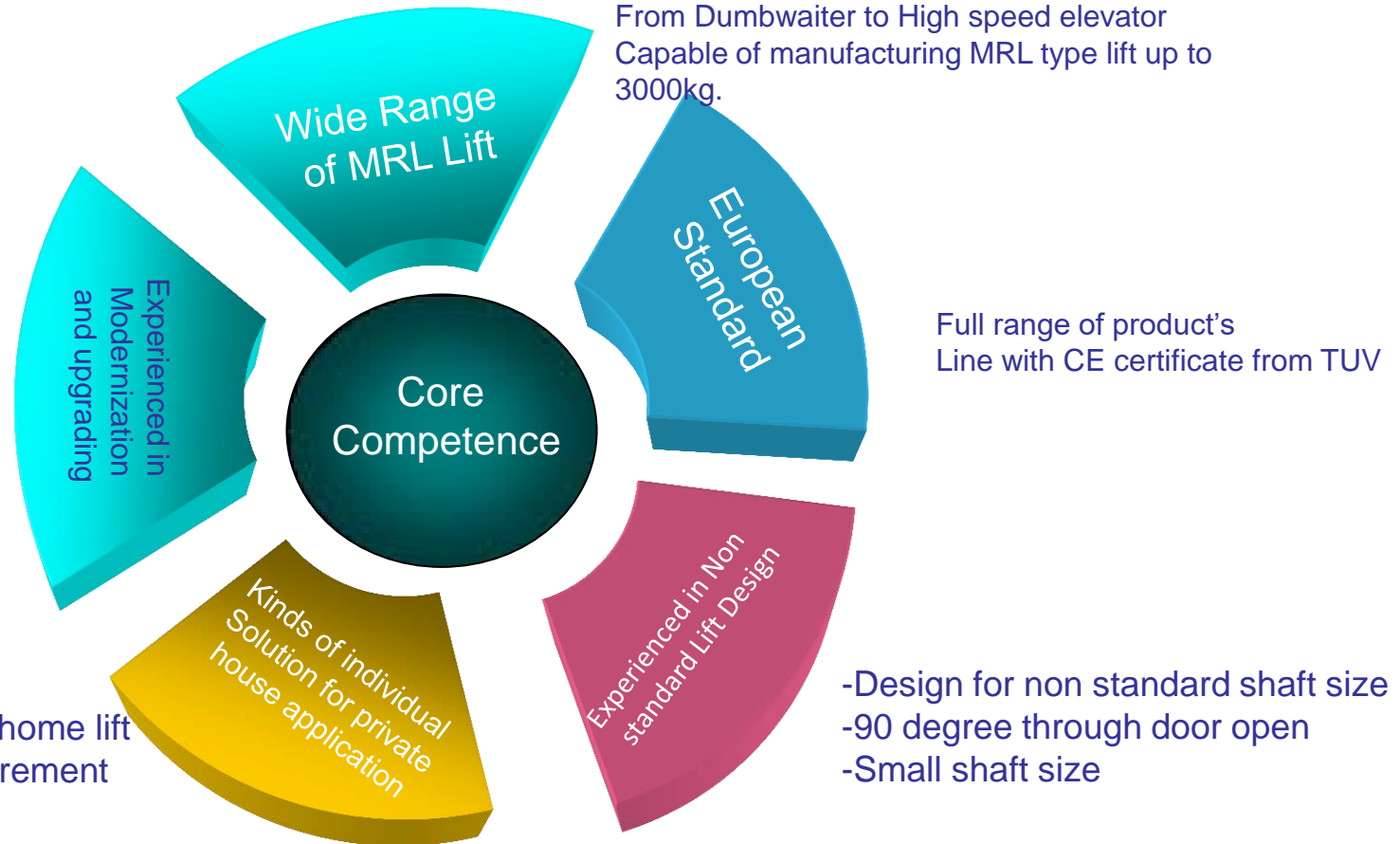






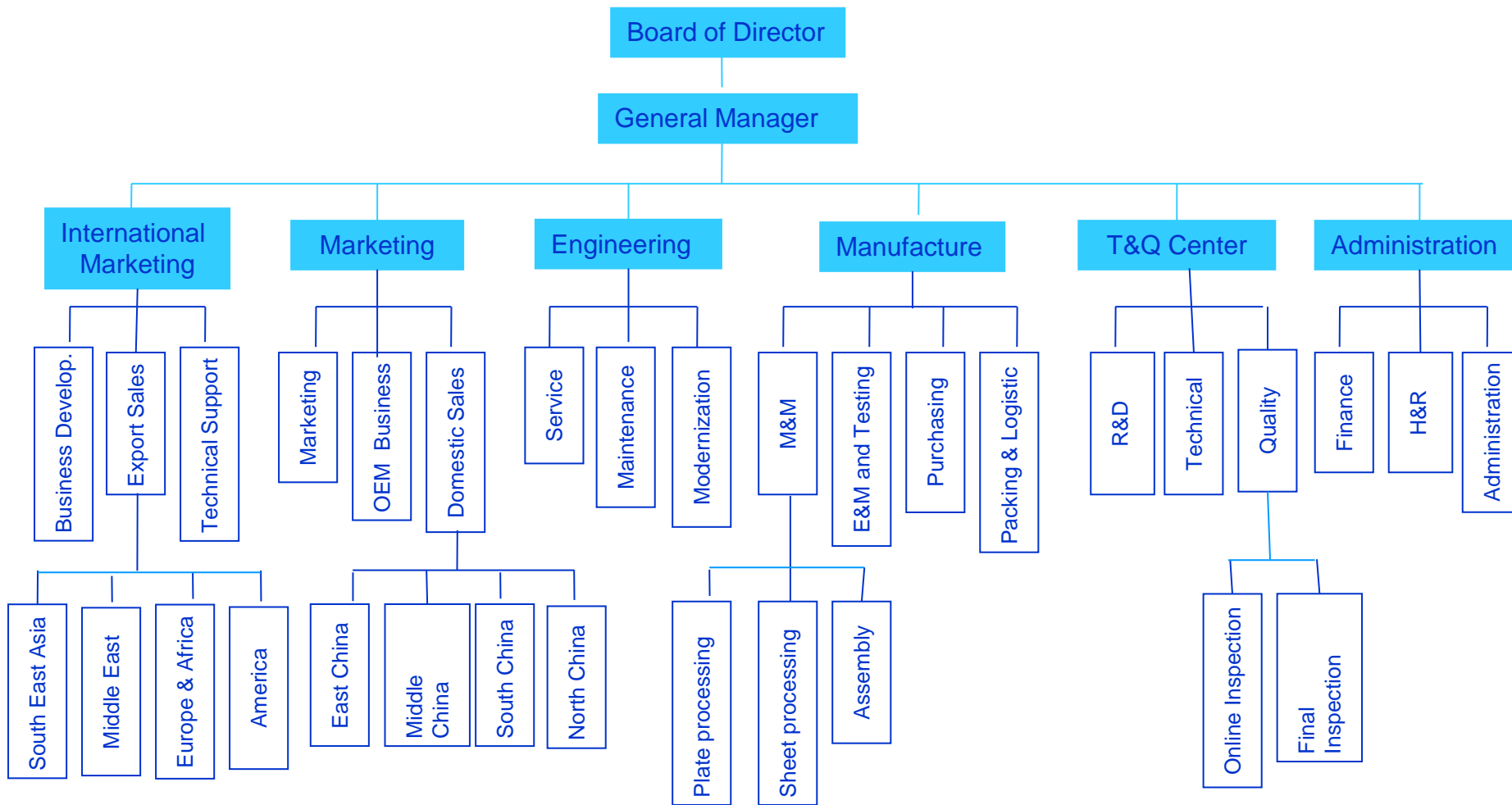
Three package solutions for different level of modernization

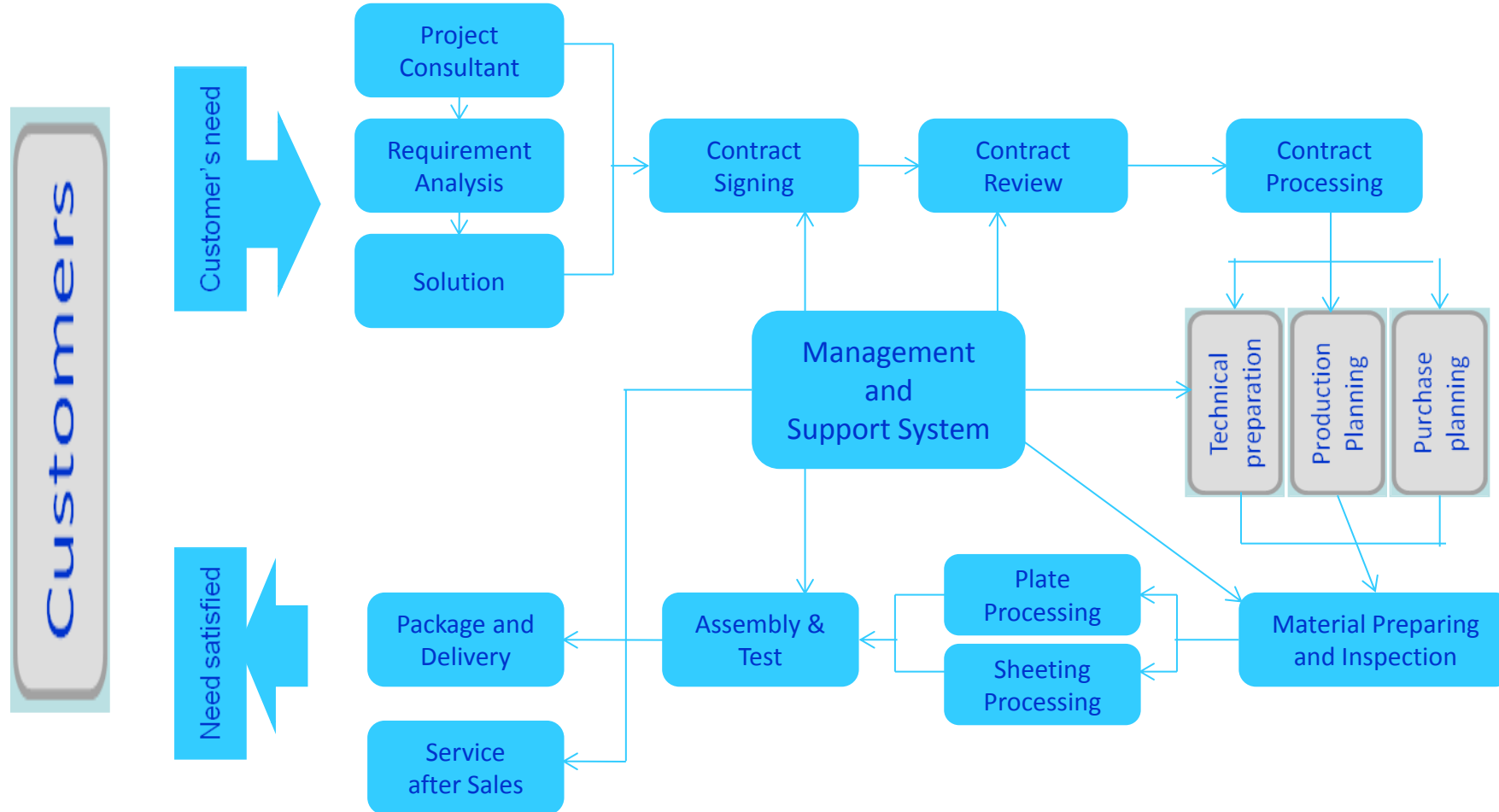
Four different type of home lift  
Fit for individual requirement



# 组织结构

## Organization Structure





The Flow Diagram of Customer Satisfied Business Process



**New Installation:** Providing Passenger lift, MRL lift, Home lift, Cargo lift, Car lift, Dumbwaiter, Escalator and Moving which meets EN Requirement with CE certificate or meets customer's local safety regulation

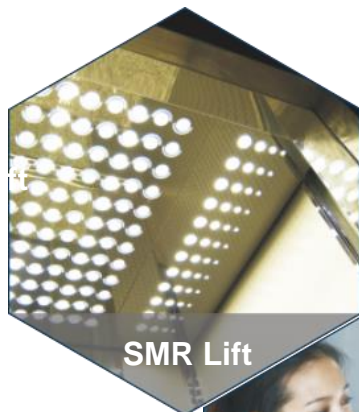
**OEM or ODM:** Providing complete lift parts package with WELLS' standard or special design according to customer' requirement , or manufacture the lift in terms of customer's design and specification

**Modernization:** Modernization solution with only replacing control system or replacing control and traction machine, or replacing control system, traction machine and related mechanical parts

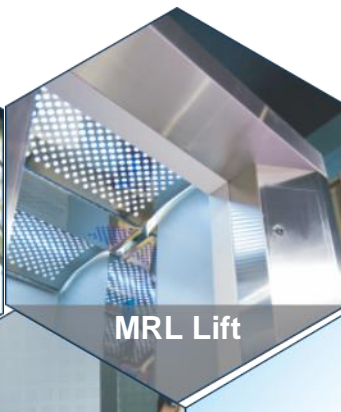


# 产品介绍

## Products Introduction



SMR Lift



MRL Lift



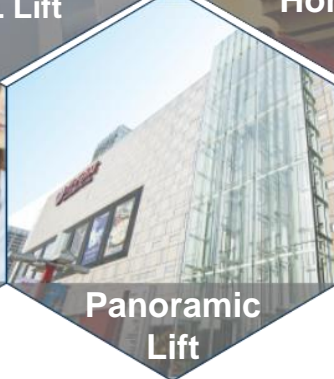
Home Lift



Goods Lift



Hospital Lift



Panoramic Lift



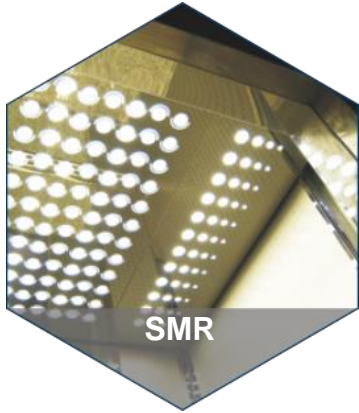
Car Lift



Escalator/  
Travelator



Quality Products Best Service

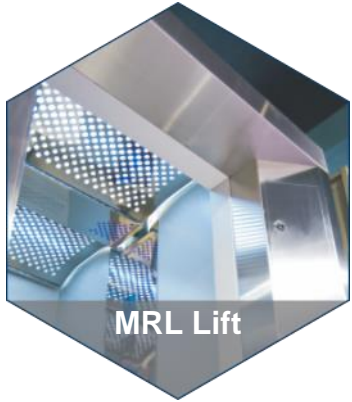


C2000P

- Load (kg) : 630, 800,1000,1150,1250, 1350,1600,2000 ;
- Speed (m/s) : 1.0, 1.5, 1.75, 2.0, 2.5, 3.0, 3.5, 4.0,5.0 6.0;
- Travel height  $\leq 280\text{m}$  ;
- Stop :  $\leq 80$  ;
- Control :  $\leq 8$  cars;



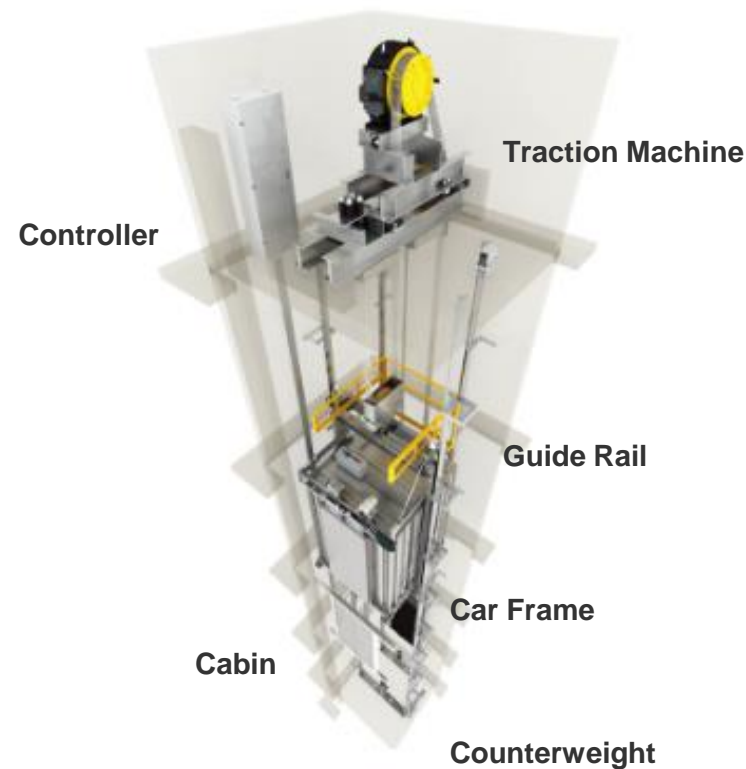




**C2000LP**

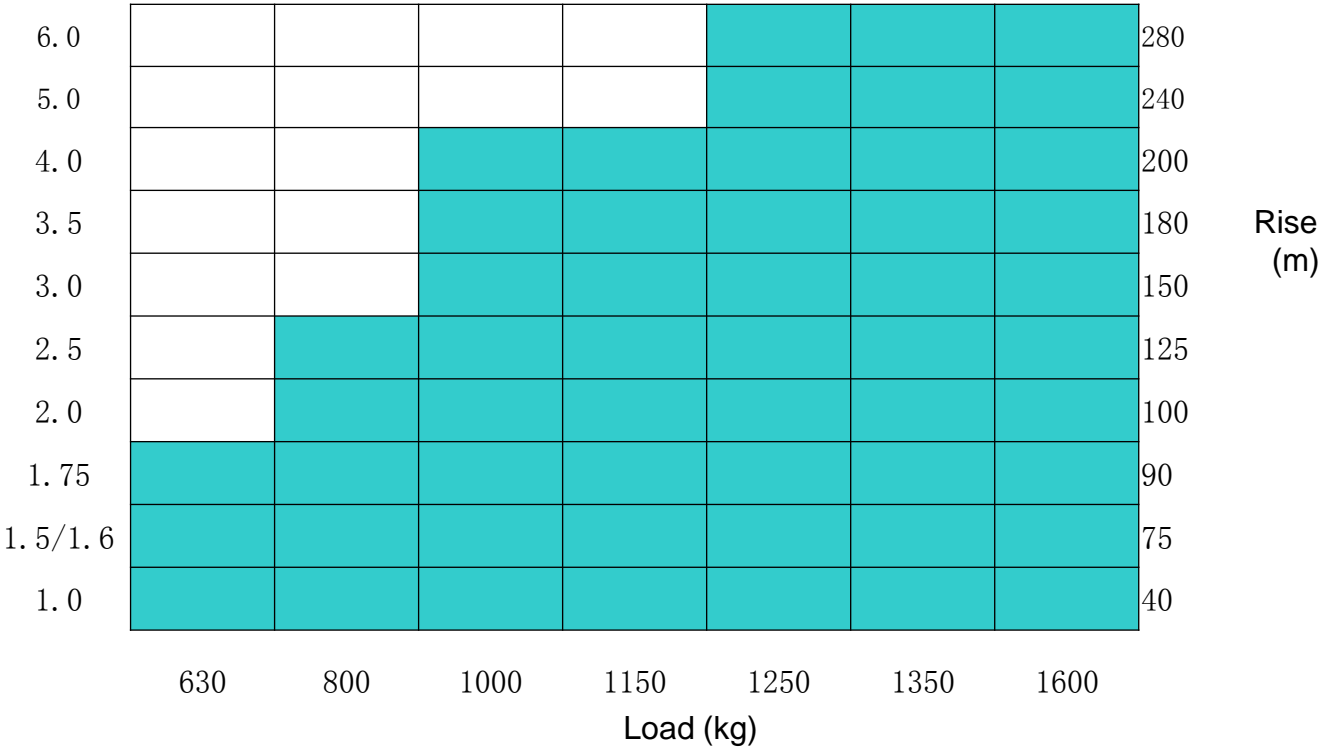
- **Load (kg) : 630, 800, 1000,1150, 1250,1350,1600,2000;**
- **Speed (m/s) : 1.0, 1.5, 1.75, 2.0, 2.5;**
- **Travel height :  $\leq 120\text{m}$ ;**
- **Stops :  $\leq 40$  ;**
- **Control :  $\leq 8$  cars**





Speed  
(m/s)

Passenger Lift Scope





Hospital Lift

**C2000H**

- Load (kg) : 1350, 1600, 2000
- Speed (m/s) : 1.0, 1.5, 1.75, 2.0, 2.5
- Travel :  $\leq 120\text{m}$ ;
- Stops :  $\leq 40$  ;
- Control :  $\leq 4$  cars
- Cabin : Deep type;
- Opening : SO, CO;
- Machine: Machine Room







Home Lift

C1000

Type	Traditional	MRL	Pitless	Hydraulic
Model	C1100	C1200	C1300	C1400
Load	250kg~400kg	250kg~400kg	250kg~400kg	250kg~400kg
Rated speed	0.4m/s	0.4m/s	0.4m/s	0.25m/s
Stops	5	5	5	4
Drive	Traction	Traction	Traction	Hydrualic
Car frame	Counter leveler	Frame	Counter leveler	Counter leveler
Pit height	400mm	600mm	150mm	200mm





**C2000G**

- Load (kg) : 1000; 1250; 1600,2000
- Speed(m/s) : 1.0,1.5,1.75,2.0, 2.5;
- Travel :  $\leq 120\text{m}$  ;
- Stops :  $\leq 40$  ;
- Control :  $\leq 4$  cars ;
- Cabin type : Half circle, Square





**C3000**

**C3000L**

### C3000 MMR Goods Lift

- Load (kg) : 1000, 2000, 3000, 5000
- Speed (m/s) : 0.25、 0.5、 1.0  
( 1.0m/s ≤ 3000kg ) ;
- Travel height : ≤ 50m ;
- Drive : VVVF ;
- Opening: Central Open

### C3000L MRL Goods Lift

- Load (kg) : 2000, 3000
- Speed(m/s) : 0.5、 1.0
- Travel height : ≤ 30m;
- Traction : PM Machine;
- Opening : Central Open

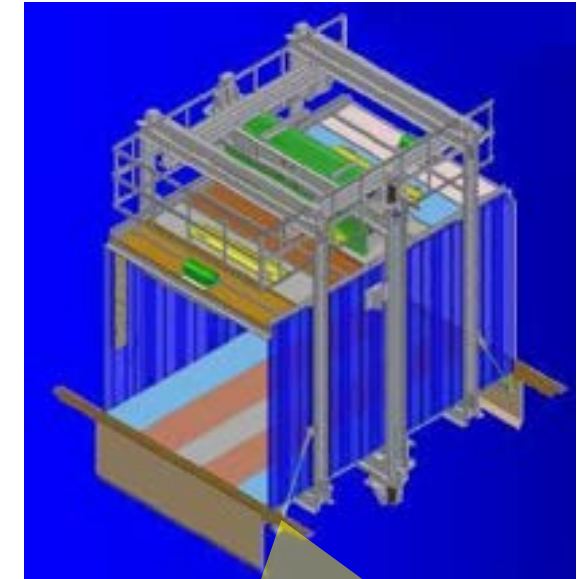






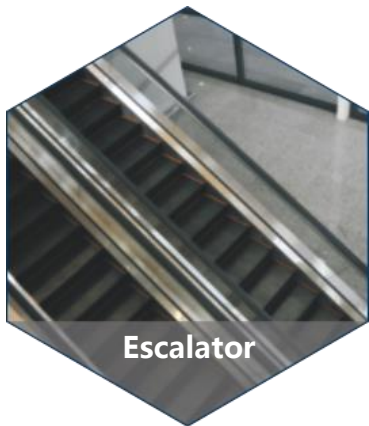
**C5000**

- Load (kg) : 3000、 5000 ;
- Speed (m/s) : 0.5;
- Travel :  $\leq 30\text{m}$  ;
- Stops :  $\leq 10$  ;
- Drive : VVVF ;
- Door Opening : Central Open



6 guide rails  
For car





Escalator

**ES6000**

**TS6000**

### ES6000 Escalator

- Step Width ( mm ) : 600, 800, 1000 ;
- Speed (m/s) : 0.5;
- Inclination : 30°、 35°
- Travel height :  $\leq 24\text{m}$  (  $35^\circ \leq 6\text{m}$  ) ;
- Application : Commercial, Public ;
- Installation : In door、 Out door.

### ES6000 Travelator

- Step Width ( mm ) : 800, 1000, 1200 ;
- Speed (m/s) : 0.5;
- Inclination : 0°、 10°、 11°、 11°
- Travel Length :  $\leq 100\text{m}$ ;
- Application : Commercial, Public ;
- Installation : In door、 Out door.





ISO14001 Enviromental Management Certificate



OHSAS18001 Healthy and Safety Management

# 质量证书

Quality Certificates



ISO9001 Quality Management Certificate



CE Certificate of MR Lift





ZERTIFIKAT ♦ CERTIFICATE ♦ 认证证书 ♦ CERTIFICADO ♦ CERTIFICAT



### EC type-examination certificate

<b>Certificate no.:</b>	MA 157
<b>Notified body:</b>	TÜV SÜD Industrie Service GmbH Widenplatz 199 80089 München - Germany
<b>Applicant/ Certificate holder:</b>	WELLS ELEVATOR PRODUCTS CO., LTD. No. 88, Xunsheng Road, Qingpu District Shanghai 201700 - P.R. China
<b>Date of application:</b>	2010-07-12
<b>Manufacturer:</b>	WELLS ELEVATOR PRODUCTS CO., LTD. No. 88, Xunsheng Road, Qingpu District Shanghai 201700 - P.R. China
<b>Product:</b>	Traction drive lift, without separate machine room MRL-Lifts 2.1
<b>Type:</b>	TKJW 400 - TKJW 800 - TKJW 1000 TKJW 1200 - TKJW 1800
<b>Test laboratory:</b>	TÜV SÜD Industrie Service GmbH PrüfLaboratorium für Produkte der Fördertechnik Prüfbereich Aufzüge und Seilfesteilebauteile Widenplatz 199 80089 München - Germany
<b>Date and number of the test report:</b>	2010-12-14 MA 157
<b>EC Directive:</b>	85/116/EC
<b>Result:</b>	The model lift conforms to the essential safety requirements of the Directive for the respective scope of application stated on page 1 - 4 of the annex to this EC type-examination certificate, keeping the mentioned conditions.
<b>Date of issue:</b>	2010-12-14

Certification body for lifts and safety components  
Identification number: 0036




TUV<sup>®</sup>

CE Certificate of MRL

ZERTIFIKAT ♦ CERTIFICATE ♦ 认证证书 ♦ CERTIFICADO ♦ CERTIFICAT



### EC type-examination certificate

<b>Certificate no.:</b>	MA 158
<b>Notified body:</b>	TÜV SÜD Industrie Service GmbH Widenplatz 199 80089 München - Germany
<b>Applicant/ Certificate holder:</b>	WELLS ELEVATOR PRODUCTS CO., LTD. No. 88, Xunsheng Road, Qingpu District Shanghai 201700 - P.R. China
<b>Date of application:</b>	2010-11-12
<b>Manufacturer:</b>	WELLS ELEVATOR PRODUCTS CO., LTD. No. 88, Xunsheng Road, Qingpu District Shanghai 201700 - P.R. China
<b>Product:</b>	Traction drive lift, with a separate machine room MRL lift
<b>Type:</b>	Cargo 2000 - Cargo 3000 - Cargo 4000 - Cargo 5000
<b>Test laboratory:</b>	TÜV SÜD Industrie Service GmbH PrüfLaboratorium für Produkte der Fördertechnik Prüfbereich Aufzüge und Seilfesteilebauteile Widenplatz 199 80089 München - Germany
<b>Date and number of the test report:</b>	2010-12-14 MA 158
<b>EC Directive:</b>	85/116/EC
<b>Result:</b>	The model lift conforms to the essential safety requirements of the Directive for the respective scope of application stated on page 1 - 2 of the annex to this EC type-examination certificate, keeping the mentioned conditions.
<b>Date of issue:</b>	2010-12-14

Certification body for lifts and safety components  
Identification number: 0036




TUV<sup>®</sup>

CE Certificate of Goods lift



ZERTIFIKAT • CERTIFICATE • 证书 • CERTIFICADO • CERTIFICAT

### Certificate Examination of Conformity



Certificate No.: KP 1191

Certification Body: TÜV SÜD Industrie Service GmbH  
Wendenstr. 180  
80080 München - Germany

Applicant:  
Certificate Holder: WELLS ELEVATOR PRODUCTS CO., LTD.  
No. 68, Xinhong Road,  
Qingpu District  
Shanghai 201700 - P.R. China

Date of application: 2012-03-30

Manufacturer: WELLS ELEVATOR PRODUCTS CO., LTD.  
No. 68, Xinhong Road,  
Qingpu District  
Shanghai 201700 - P.R. China

Product, Type: Escalator, WLESC

Scope of application: Rise 2 to 16 m, depending on:  
- step width (800 / 800 / 1000)  
- inclination (27.3° / 30° / 33°)  
- rated speed (max 0.75 m/s)

Test laboratory: TÜV SÜD Industrie Service GmbH  
Prüfzentrum für Produkte der Fördertechnik  
Prüfversuch Aufzüge und Sicherheitsbauteile  
Wendenstraße 180,  
80080 München - Germany

Date and  
Number of Test Report: 2012-04-10  
KP 1191

Test specifications: - 2009/42/EC, Annex I  
- EN115-1:2008+A1:2010

Validity: This certificate is valid until 2017-04-09

Result: The escalator WLESC fulfils the requirements of  
the test specifications for the respective scope of  
application stated in the annex, page 1, of this  
certificate, keeping the mentioned conditions.

Date of issue: 2012-04-10

Certification body for lifts and cranes

Christian Rühmberg



TUV®

CE Certificate of Escalator

ZERTIFIKAT • CERTIFICATE • 证书 • CERTIFICADO • CERTIFICAT

### Certificate Examination of Conformity



Certificate No.: KP120

Certification Body: TÜV SÜD Industrie Service GmbH  
Wendenstr. 180,  
80080 München - Germany

Applicant:  
Certificate Holder: WELLS ELEVATOR CO., LTD.  
No. 68, Xinhong Road, Qingpu District  
Shanghai 201700 - P.R. China

Date of application: 2011-05-12

Manufacturer: WELLS ELEVATOR CO., LTD.  
No. 68, Xinhong Road, Qingpu District  
Shanghai 201700 - P.R. China

Product, Type: Moving walk, WLXPS

Scope of application: Max. Length: 90.0 m depending on:  
- Pallet width (800 mm / 1100 mm)  
- inclination (0° / 5° / 12°)  
- rated speed (0.5 - 0.75 m/s)

Test laboratory: TÜV SÜD Industrie Service GmbH  
Prüfzentrum für Produkte der Fördertechnik  
Prüfversuch Aufzüge und Sicherheitsbauteile  
Wendenstraße 180,  
80080 München - Germany

Date and  
Number of Test Report: 2011-06-10  
KP120

Test specifications: - 2006/42/EC, Annex I  
- EN115-1:2008+A1:2010

Validity: This certificate is valid until 2016-06-10

Result: The moving walk WLXPS fulfils the requirements of  
the test specifications for the respective scope of  
application stated in the annex, page 1, of this  
certificate, keeping the mentioned conditions.

Date of issue: 2011-06-10

Certification body for lifts and cranes

Christian Rühmberg



TUV®

CE Certificate of Travelator

## Quality Certificates



## We Extend Life and Living Space

ТАМОЖЕННЫЙ СОЮЗ

СЕРТИФИКАТ СУБСТАНЦИИ

ЕАЭС

№ ТС RU C-CN M505.В.00009

Серия RU № 0347265

**ОРГАНИЗМ СЕРТИФИКАЦИИ** Общества с ограниченной ответственностью **Импортно-экспортный центр «Импекс-Центр»** Место нахождения: 125118, Российская Федерация, город Москва, проезд Нарынские, дом 12, строение 1. Фактический адрес: 125052, Республика Татарстан, г.Ижевск, Ижевский проспект, дом 204, строение 9. Телефон: +7 495 517 36 18. Факс: +7 495 517 36 18. Адрес электронной почты: [info@impex.ru](mailto:info@impex.ru). Адрес интернет-сайта: [www.impex.ru](http://www.impex.ru). Акт о регистрации № М.В.Р. 214905 от 17.08.2015 года, выданный Федеральным Службой по аккредитации.

**ПОСТАВЩИК** **SHANGHAI WILU ELEVATOR PRODUCTS CO., LTD.** Компания зарегистрирована в Китае по государственному регистрационному номеру 390000322015120004. Аккредитованная аккредитационным учреждением происхождения в Китае. Место нахождения: Building 1 No. 68, Xinying Road, Industrial Park (Qigou District, Shanghai, China (Honsai)). Фактический адрес: No. 221, Jingling Road, Qiantang Town Kunshan City, Jiangsu Province, China (Honsai). Тел.: 0012-34851576. Факс: 0012-34851576. Адрес электронной почты: [export@wileu.com](mailto:export@wileu.com)

**ИМПОРТЕР** **SHANGHAI WILU ELEVATOR PRODUCTS CO., LTD.** Место нахождения: Building 1 No. 68 Xinying Road, Industrial Park, Qigou District, Shanghai, China (Honsai). Фактический адрес: No. 221, Jingling Road, Qiantang Town Kunshan City, Jiangsu Province, China (Honsai). Тел.: 0012-34851576. Факс: 0012-34851576. Адрес электронной почты: [export@wileu.com](mailto:export@wileu.com)

**ПРОДУКЦИЯ** Подъемные механизмы (лифты) без машинного отделения модели T63N, предназначенные для использования исключительно, собранные до 1-го ноября в Китае включительно. Серийный номер: Промышлен: Серия RU № 1230438, № 1230439, № 1230440

**КОД ТОВАРА** 8428 10 200 2

**СЕРТИФИКАТ ТРЕБОВАНИЙ** Технический документ Лицензия на импорт ТР ТС 014/2001 «О безопасности лифтов, установленных в здании» Комитета Таможенного союза от 18.08.2010 г. № 124.

**СЕРТИФИКАТ ВЛАДА НА ОСНОВАНИИ** протокола испытаний (испытаний) и владения от 14.11.2016 года № С.С. 001. Испытательный лаборатория (Испытатель) Общества с ограниченной ответственностью «Импортно-экспортный центр «Импекс-Центр» (Испытатель) Место нахождения: 125052, Республика Татарстан, г.Ижевск, Ижевский проспект, дом 204, строение 9. Телефон: +7 495 517 36 18. Факс: +7 495 517 36 18. Адрес электронной почты: [info@impex.ru](mailto:info@impex.ru). Акт о регистрации № М.В.Р. 214905 от 17.08.2015 года, выданный Федеральным Службой по аккредитации.

Продукт, подлежащий проверке, предназначен для использования, предназначенный для использования (лифта) с подъемным механизмом, чтобы обеспечить безопасность пассажиров при движении на вертикальном транспорте безопасности и предотвращения диверсии.

**ДОПОЛНИТЕЛЬНАЯ ИНФОРМАЦИЯ** Протокол испытаний (испытаний) и владения от 14.11.2016 года № С.С. 001. Испытательный лаборатория (Испытатель) Общества с ограниченной ответственностью «Импортно-экспортный центр «Импекс-Центр» (Испытатель) Место нахождения: 125052, Республика Татарстан, г.Ижевск, Ижевский проспект, дом 204, строение 9. Телефон: +7 495 517 36 18. Факс: +7 495 517 36 18. Адрес электронной почты: [info@impex.ru](mailto:info@impex.ru). Акт о регистрации № М.В.Р. 214905 от 17.08.2015 года, выданный Федеральным Службой по аккредитации.

**СРОК ДЕЙСТВИЯ** 14.12.2016 (до) 14.12.2018 **ВЛАДЕЛЬЦА** В.Г. Ширинин (подпись) А.С. Гусев (подпись)

## EAC Certificate of MRL LIFT

[illegible]

## CE Certificate of MR Lift



# International Market and Sales Network



Branch Company in:  
Germany, Hongkong,  
Malaysia, Iran

Projects in  
Malaysia, Singapore,  
Indonesia, Australia  
England, Romania,  
Bulgaria, Albania,  
Germany, Middle East  
South Africa,  
South America, etc  
Over 30 countries



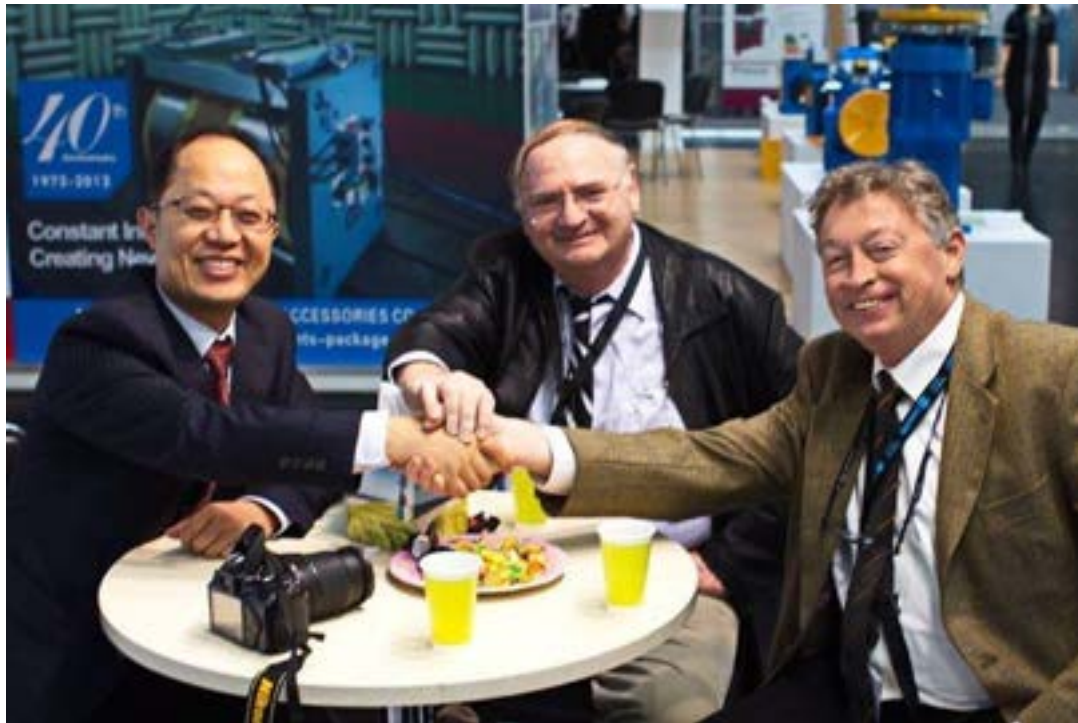


**Elevator Expo Italy 2009**



**Elevator Expo 2010  
Brazil**

## International Activities



**Elevator Expo 2013  
Germany**

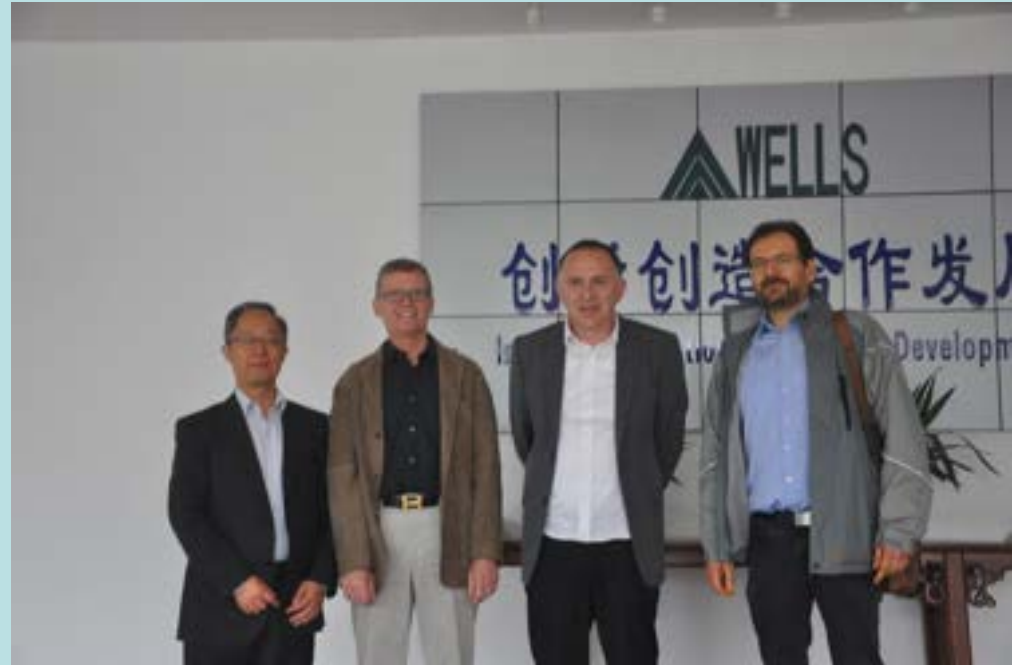


**Exhibition in Dubai 2014**

## International Cooperation



Partner in Italy



Partner from Germany



## International Cooperation



Client in Bulgaria



Client in Brazil



## International Cooperation



Safety Training Activities in Malaysia 2013

## Reference projects domestic



82 units 1000kg, 1.75m/s  
New city residential, Taiyuan



16 units 1000kg, 2.0m/s  
Shenzhen



## Reference projects domestic



11 units 800kg, 1.75m/s  
Linyin Residential, Henan



10 units 1000kg, 1.75m/s  
10 units 800kg, 1.5m/s  
Suyang Residential, Jiangsu

## Reference projects domestic



56 units home lift  
XinchengShenjing, Shanghai



3 units Home lift  
Wutaishan, Shanxi



## Reference project international



Sunway Resort Hotel

4 units of elevator 1.5m/s ,  
8 stops, 1150kg.

## Reference project international



GM Klang Phase A、B、C  
Malaysia

Goods lift, 2000kg, 3000kg  
Passenger lift, 1600kg, 2750kg



## Reference project international



1000kg, 1.75m/s, 8 stops  
SUNWAY UNIVERSITY

## Reference project international



5 stars Hotel  
Waterfront Hotel

1350kg, 2.5m/s , 6 car's Group control



## Reference project international



SWISS GARDEN HOTEL  
1350kg, 4m/s, 8 units



Complex The Shore  
12 units elevator, 4.0 m/s, 1600kg 38 stops

## Reference project international

Mid Valley , Malaysia



42 units of elevator, 3.0m/s, 2.5m/s, 1.75m/s  
73 units of escalator





## Reference project international



8 units of elevator  
10 units of escalator



Lucky Square Mall  
Indonesia



## Reference project international



4 units of elevator, 12 stops, 2.5m/s, 1000kg  
6 units of escalators



UPH Business School  
Indonesia



4 units of passenger lift, 9 stops, 1250kg



Passenger Lift  
In Primary School  
Singapore



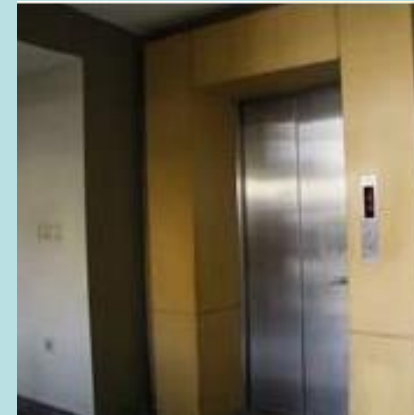
15 units of home lift, 3 stops, 320kg



Home Lift  
Malaysia



## Reference project international



Central TAFE Perth, University  
Australia

4 units of passenger lift  
MRL, 1000kg, 1.0 m/s  
2 units of goods lift  
MRL, 2000kg. 0.5m/s



## Reference project international



48 units of elevator  
800kg, 14 stops, 1.5m/s  
Oasis Silicon Dubai



## Reference project international



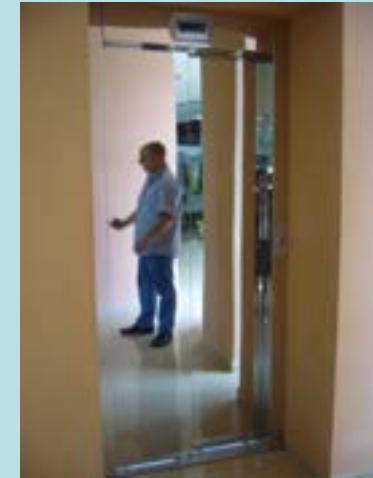
18 units of elevator  
1000kg, 9 stops, 1.5m/s  
Platinum Residential Dubai



## Reference project international



City Center Mall Bulgaria  
12 units escalator 4 units elevator





## Reference project international



Two units of escalator  
4 units of MRL lift, 800kg  
Queen Center Tehran

## Reference project international



6 units of escalator  
2 units of MRL lift, 800kg  
2 units of Panoramic lift 1000kg  
JAAMAJAM Mall





12 units of passenger lift,  
800kg, 12 stops  
Sultanbey Residential Building

Turkey



## Reference project international



**Büro Gewerbe**

9 floors, 1000kg, 1.6m/s  
2 Units



**Kaufhause**

5 Stops, 1000kg、1.0m/s

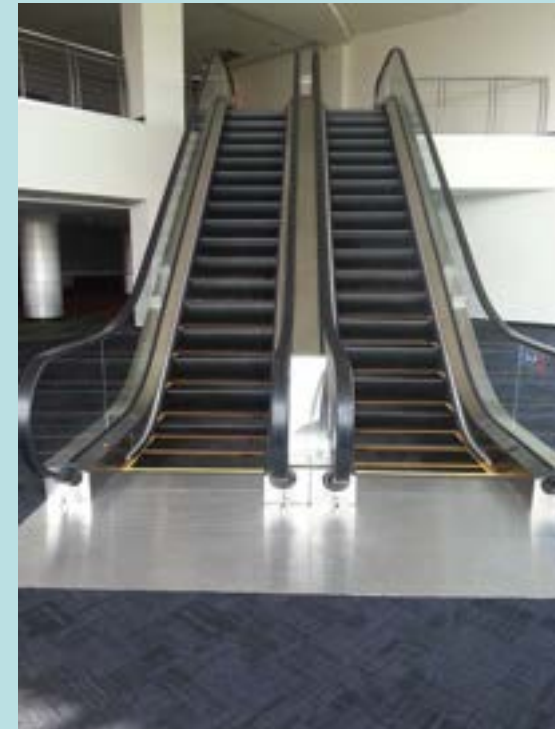


**Germany**

## Reference project international



Maldives Airport



4 unit of passenger lift, 1600kg, 3 stops  
2 units of escalator 4600mm rise

# Thanks



Quality Products Best Service

上海威茨堡电梯有限公司 | WELLS ELEVATOR PRODUCTS CO., LTD.